



# THE LEGACY PROGRAM

Empowered by the youth, for the youth, for the future.



**MABUHAY,**

**AT LEGACY, WE EMPOWER THE  
NEXT GENERATION IN THE  
PHILIPPINES BY CREATING  
COMMUNITY-DRIVEN  
EDUCATIONAL OPPORTUNITIES.  
THROUGH SCHOLARSHIPS AND  
COLLABORATIVE LEARNING  
SPACES, WE'RE SUPPORTING  
STUDENTS AS THEY BUILD A  
BRIGHTER FUTURE.**

**LEGACY**  
PROGRAM

# INTRODUCTION

Guided by "bayanihan", we move together as one community. We are a dedicated team of students, young professionals, teachers, and academics who are determined to support the next generation of leaders. *At the heart of what we do are our Linang Workshops, where learners develop into leaders who think critically, listen actively, and create meaningful change for the world around them.*

Students who excel at the workshops are eligible for the *Legacy Award*, a scholarship program designed to provide support for academic success at university. With your support, we can support even more students and give them an education they deserve.

We recently completed a workshop cycle in Bambang, Laguna, and are preparing to launch a new series in Manila, Philippines. Each workshop is carefully designed and informed by a dialogue with teachers and students to create a learning experience that is fun, impactful, and targeted to student needs.

In the United Kingdom, our initiatives connect supporters to our mission, raising awareness and resources to bring these opportunities to life.



# DONATIONS - HOW YOU CAN HELP US

We are a young charity with a big vision to raise changemakers who are equipped to create meaningful impact throughout university and in their future careers. With a donation you can help us keep our workshops running this 2026-2028. Since our inception, we have relied on the student community to fundraise with us but as the program and the need for our provisions grow, we are reaching out to the wider community.

Expense	Cost, GBP
Workshops (10x £70)	£700
Training courses (Safe Guarding, GDPR, Accounting)	£245
Canva Annual Subscription (renews 15 Apr 2025) - marketing platform	£100
Fundraising Events	£500
CAF Charity Bank Account Monthly Fee (11 x £5)	£55
4 Year College Scholarship Funds for up to 16 students.	£10,000
<b>TOTAL</b>	<b>£11600</b>



# SCHOLARSHIPS: THE LEGACY AWARD

While intellectual ability, academic performance, leadership, and engagement are factors in the screening of financial aid applications, financial aid scholarships are not granted on these bases alone. The Legacy award is means tested and will prioritise applicants with the greatest financial need.

Scholarship Type	£ yearly
100% Tuition*	£520
75% Tuition	£460
50% Tuition	£260
25% Tuition	£115
Resource Grant	£260

Students must be attending a registered Filipino university and must send proof of enrolment each year along with supporting documents that indicate their academic achievement, their contributions to campus life, and feedback on how the scholarship has benefitted their education.

\*based on the average yearly tuition cost in the Philippines of ₱40,000, for the year 2024/2025



# LINANG WORKSHOPS AND THEIR IMPACT

In October 2024, we proudly hosted the first session of the 2024/2025 Legacy Program, welcoming Grade 11 students from across Los Baños. As the workshop cycle came to a close in August 2025, we identified 6 bright students who are eligible for our scholarship program. They not only demonstrated commitment to each session but have fulfilled the five workshop aims:

**SELF  
KAPWA  
NATIONAL AND GLOBAL AWARENESS  
PRACTICAL SKILLS  
CURIOSITY**

We constantly evaluate and receive feedback to track success at every stage of a student's journey. Our impact measurement framework includes:

- Pre and post workshop surveys
- Workshop/Activity assessments
- Qualitative Workshop Observations



## Our findings so far:

**97%**

of students were actively engaged in the workshop

**94%**

respondees were excited to join the next workshops

**82%**

of students felt they were able to express their opinions during the workshop activities



# OUR COMMITMENT TO RESEARCH



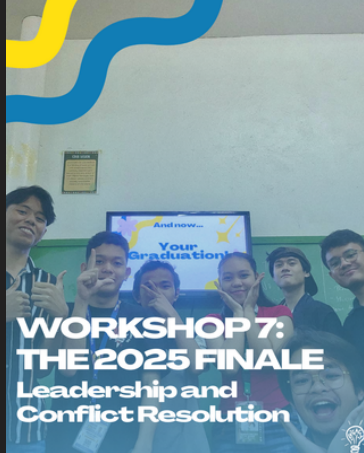
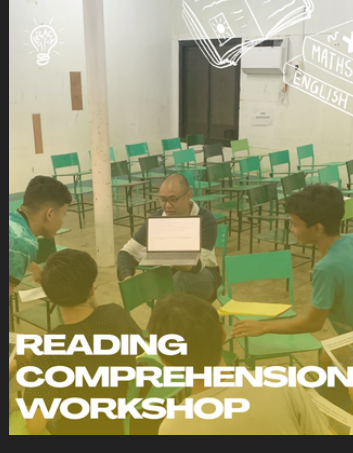
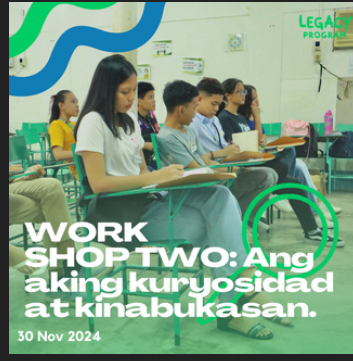
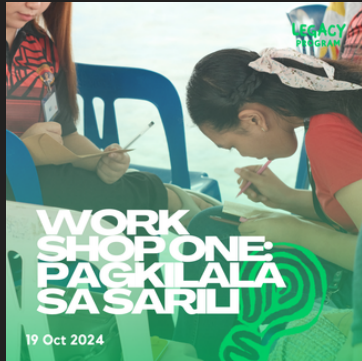
To ensure that the topics we teach are aligned to student growth, we conduct research groups with our partner schools. We carefully listened to the insights of teachers and students before shortlisting a series of topics to integrate into our curriculum.

Our in-house research team also regularly participate in seminars, where we review literature, share our findings, and implement the research into our workshops.

Most recently, we collaborated with another NGO (ISIP Pinas) in January 2026 to conduct a research seminar on critical thinking and critical pedagogy. We learnt from professors and teachers about the holistic nature of philosophy in the Philippine education system and limitations the state of education faces today. We have integrated critical pedagogy into our Linang workshops since then.



# OUR RECENT LINANG WORKSHOPS



## HERE ARE SOME OF THE THINGS STUDENTS SAID:

"One useful thing I've learned is the importance of **active listening** in effective communication."

"I learned that you must have **empowerment**. Empowerment that you yourself will work hard for yourself, you must learn to work hard in everything and think you can do it."



# A YEAR (AND A BIT) OF BUILDING COMMUNITY

Since the launch of our workshops in 2024, we supported over 80 students in their education through our workshops!

Legacy began as a simple idea - bringing together Filipino students across the UK to give back to communities in the Philippines. What started as karaoke nights, potlucks, and games turned into an international network, connected with a drive to support the next generation's educational and financial needs.



2024 saw us take on new challenge.

Our team launched the Legacy Coast2Coast Challenge, a collective effort to cover over 1,000km through swimming, running, and cycling. We raised over £2000! It was tough, but meaningful: each step was a step toward more stable, long-term support for children who deserve the chance to dream.



Brigada Eskwela is a nationwide school maintenance initiative in the Philippines that prepares public schools for the new academic year. Before the start of the 2024/2025 academic year, we fundraised we raised £410 (₱30,200) to support our partner schools, beyond our workshops. We uplift the communities we collaborate with, making sure that students are ready to learn!



We are proud to have been selected, for the second year in a row, as the charity of choice for the FilSoc Gala — a collaboration between 10 university Filipino societies. The work we do would not be possible without the help of the Filipino student community. Dedicated to celebrating Filipino youth and community strength, the event was fully planned and executed by Filipino students as they donated £1,000 (₱73,500) in support of the Legacy Program.

In 2025, we decided to take our fundraising to a new level (literally!). Members of our team and friends hiked Mount Snowdon to fundraise money for our scholars, raising over £1500 (₱117,000). Even with the challenging weather, we pushed through and still had a great time!



**Our work at Legacy has only just begun. Our true measure of success will be the impact our students make in their local communities and the skills they learn.**



# A PARTNERSHIP FOR LASTING CHANGE

By investing in education through Legacy Program, you are supporting *long-term social mobility*.

Our workshops follow a critical pedagogy that teaches knowledge within interrelated systems and power relations. We not only up skill students but develop their civic duty and awareness to social issues.

Our vision is to have a network of students, graduates, and professionals who can think critically, share knowledge, and apply their skills to create a more equitable, free future for everyone.

**Together, we are not just  
supporting education**

**—we are shaping  
futures.**

Learn more about us on:  
<https://www.legacyprogramph.com>

